

KYRIE in honor of Saint Ralph Sherwin (†1581)



ord, have mer-cy.

Lord, have mer-cy.



Christ, have mer-cy.

Christ, have mer-cy.



Lord, have mer-cy.

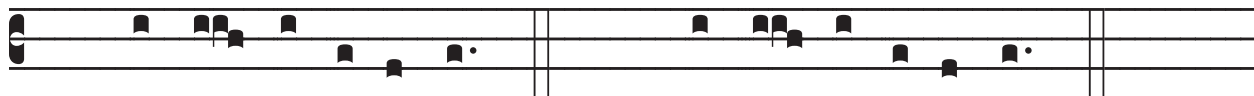
Lord, have mer-cy.

OR:



ý- ri- e e- lé- i- son.

Ký- ri- e e- lé- i- son.



Chri-ste e- lé- i- son.

Chri-ste e- lé- i- son.



Ký- ri- e e- lé- i- son.

Ký- ri- e e- lé- i- son.