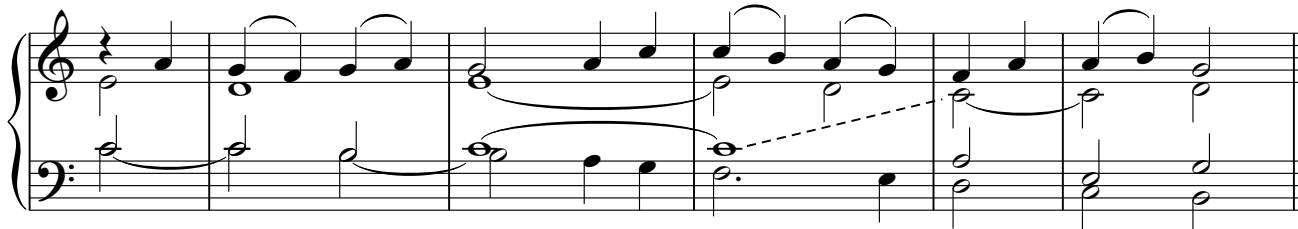


Organ
Intro



Al - le - lú - ia, al - le - lú - ia, — al - le - lú - ia.

Cantor



Al - le - lú - ia, al - le - lú - ia, — al - le - lú - ia.

All
Present

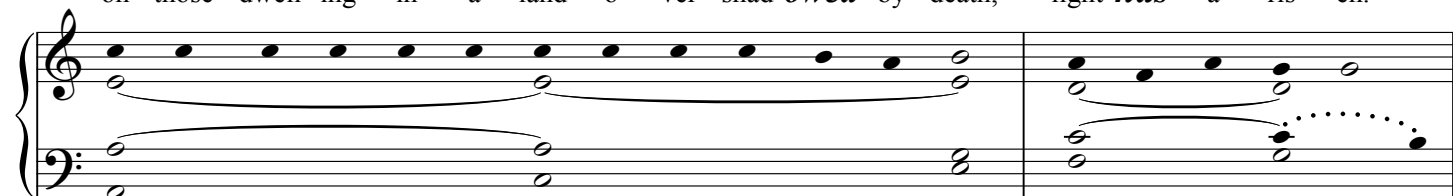


The peo - ple who sit in dark - ness have seen a great *light*;

Cantor



on those dwell - ing in a land o - ver - shad - *owed* by death, light *has* a - ris - en.



Al - le - lú - ia, al - le - lú - ia, — al - le - lú - ia.

All
Present

