

# Kyrie XIII • Graduale Romanum

Vatican II Hymnal • Page 184 • Accompaniment by Gustaaf Nees • [ccwatershed.org/vatican](http://ccwatershed.org/vatican)

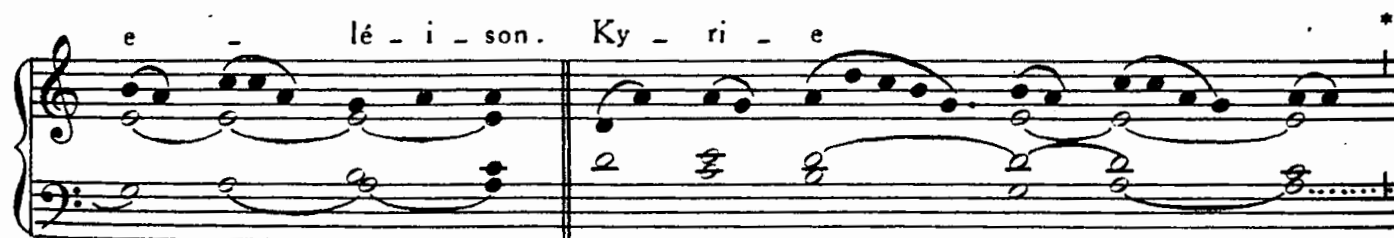
I.

Ky - ri - e   e -   lé - i - son. Ky - ri - e

e -   lé - i - son. Ky - ri - e   e -   lé - i - son.

Chri - ste   e -   lé - i - son. Chri - ste

e -   lé - i - son. Chri - ste   e -   lé - i - son.



# Gloria XIII • Graduale Romanum

Vatican II Hymnal • Accompaniment by Gustaaf Nees • Pages 184-185 • [ccwatershed.org/vatican](http://ccwatershed.org/vatican)

I.

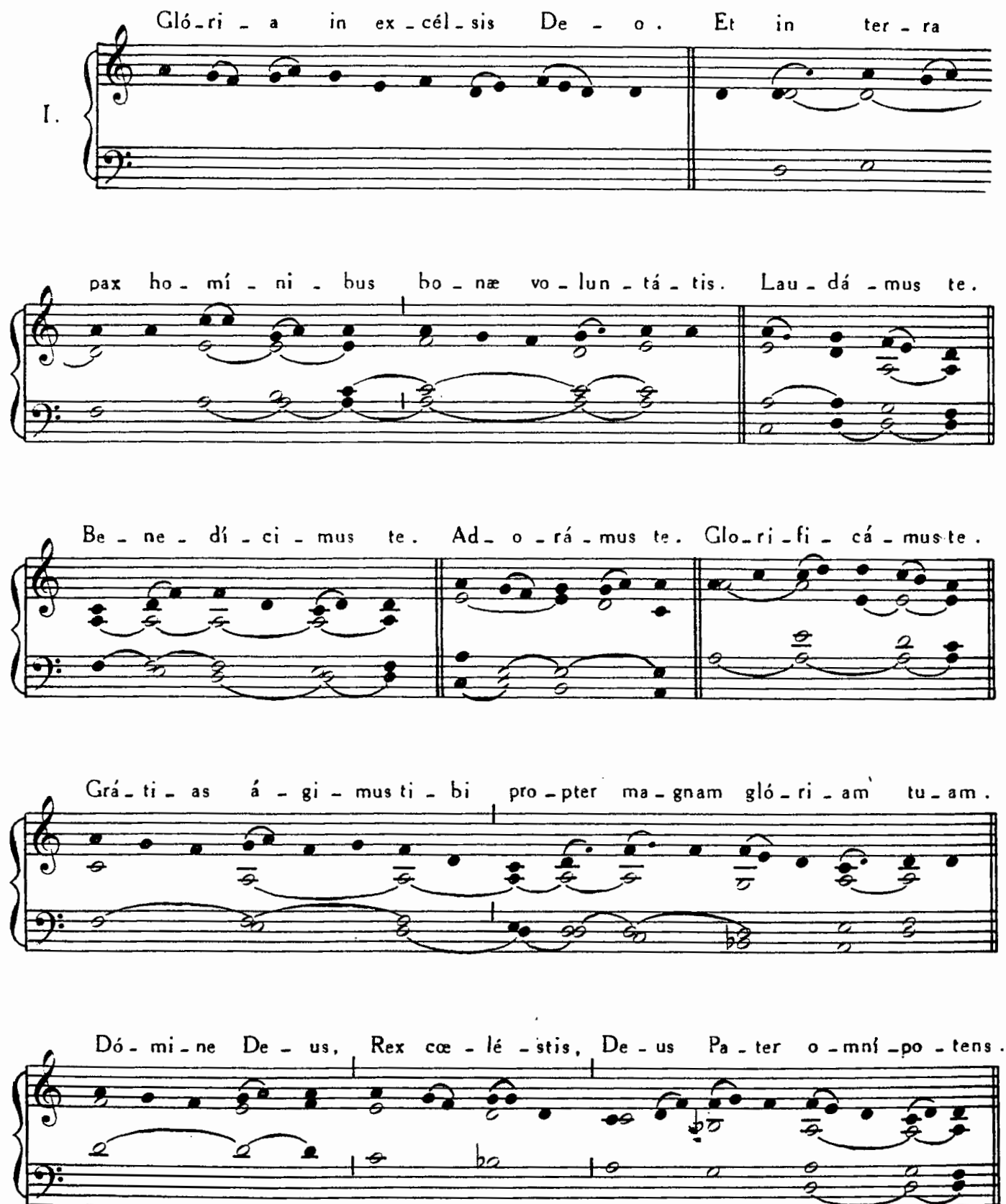
Gló-ri - a in ex - cél - sis De - o . Et in ter - ra

pax ho - mí - ni - bus bo - næ vo - lun - tá - tis. Lau - dá - mus te .

Be - ne - dí - ci - mus te . Ad - o - rá - mus te . Glo - ri - fi - cá - mus te .

Grá - ti - as á - gi - mus ti - bi pro - pter ma - gnam gló - ri - am tu - am .

Dó - mi - ne De - us, Rex cœ - lé - stis, De - us Pa - ter o - mní - po - tens .

The image displays a musical score for the Gloria XIII Graduale Romanum. It begins with a piano introduction marked 'I.' on a grand staff. The lyrics are written above the vocal staves. The score is divided into five systems, each with a vocal line and a piano accompaniment line. The lyrics are: 'Gló-ri - a in ex - cél - sis De - o . Et in ter - ra', 'pax ho - mí - ni - bus bo - næ vo - lun - tá - tis. Lau - dá - mus te .', 'Be - ne - dí - ci - mus te . Ad - o - rá - mus te . Glo - ri - fi - cá - mus te .', 'Grá - ti - as á - gi - mus ti - bi pro - pter ma - gnam gló - ri - am tu - am .', and 'Dó - mi - ne De - us, Rex cœ - lé - stis, De - us Pa - ter o - mní - po - tens .'. The piano accompaniment consists of chords and melodic lines in the left and right hands.

Dó - mi - ne Fi - li u - ni - gé - ni - te Je - su Chri - ste .

Dó - mi - ne De - us, A - gnus De - i, Fi - li - us Pa - tris . Qui

tol - lis pec - cá - ta mun - di, mi - se - ré - re no - bis . Qui tol - lis

pec - cá - ta mun - di, sú - ci - pe de - pre - ca - ti - ó - nem no - stram .

Qui se - des ad dex - te - ram Pa - tris, mi - se - ré - re no - bis.

Quó - ni - am tu so - lus san - ctus. Tu so - lus Dó - mi - nus,

Tu so - lus Al - tis - si - mus, Je - su Chri - ste. Cum San - cto Spí -

- ri - tu in gló - ri - a De - i Pa - tris. A - men.

This page has been intentionally left blank.

***[ccwatershed.org/vatican](http://ccwatershed.org/vatican)***

# Gloria XIII • English Adaptation by Bruce E. Ford

Vatican II Hymnal • Pages 185-186 • [ccwatershed.org/vatican](http://ccwatershed.org/vatican)

*The organ accompaniment for the English version has not been completed.  
In the meantime, we have included the Latin version by Henri Potiron.*

Gloria

Gló-ri - a in excél-sis Dé - o Et in tér-ra pax ho-mí - ni - bus

bó-næ vo-lun - tá-tis. Lau - dá-mus te. Be-ne - dí-ci-mus te. A-do - rá-mus te.

Glo-ri-fi - cá-mus te. Grá-ti-as á - gimus tí - bi própter má - gnam gló - ri-am tú-am.

Dó-mi-ne Dé - us Rex cæ - lé - stis Dé-us Pá - ter o - mní-po - tens. Dó-mi-ne Fí - li



u - ni - gé - ni - te Jé - su Chríste. Dómi - ne Dé - us, A - gnus Dé - i, Fí - li - us Pá - tris.



Qui tól - lis pec - cá - ta mún - di, mi - se - ré - re no - bis. Qui tól - lis pec - cá - ta mún - di,



sú - sci - pe depre - ca - ti - ó - nem nó - stram. Qui sé - des ad dé - xte - ram Pá - tris, mi - se - ré - re nó - bis.



Quó - ni - am tu só - lus sán - ctus. Tu só - lus Dó - mi - nus. Tu só - lus Al - tís - si - mus,



Jé - su Chríste. Cum Sán - cto Spí - ri - tu, in gló - ri - a Dé - i Pá - tris. A - men.

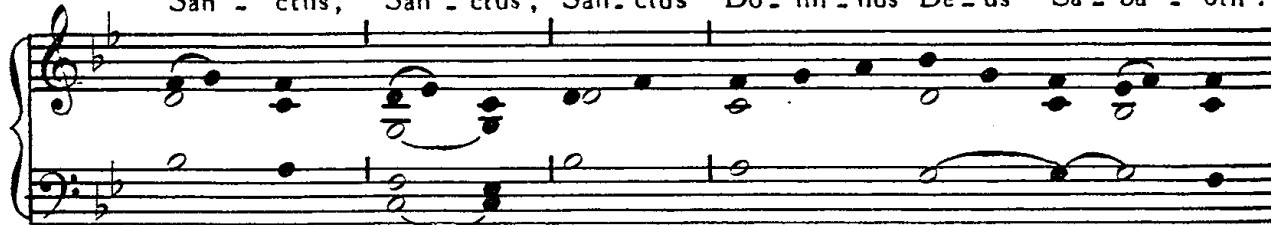





# Sanctus XIII • Graduale Romanum

Vatican II Hymnal • Page 187 • Accompaniment by Gustaaf Nees • [ccwatershed.org/vatican](http://ccwatershed.org/vatican)

VIII. San - ctus, \* San - ctus, San - ctus Dó - mi - nus De - us Sá - ba - oth .



Ple - ni sunt cœ - li et ter - ra gló - ri - a tu - a .



Ho - sán - na in ex - cél - sis . Be - ne - dí - ctus qui ve - nit in



nó - mi - ne Dó - mi - ni . Ho - sán - na in ex - cél - sis .



# Sanctus XIII • Graduale Romanum

Vatican II Hymnal • Page 187 • Accompaniment by Henri Potiron • [ccwatershed.org/vatican](http://ccwatershed.org/vatican)

Sán-ctus, \*Sán-ctus, Sán-ctus Dóminus Déus Sába - oth. Plá-ni sunt cæli et térra gló-ri-a tú - a.

Sanctus  
VIII

Ho-sán-na in ex - cé-l-sis. Be-ne-díctus qui vé-nit in nó-mi-ne Dó-mi-ni. Ho-sán-na in ex - cé-l-sis.

The image shows two systems of musical notation for piano accompaniment. Each system consists of a grand staff with a treble and bass clef. The first system is for the text 'Sán-ctus, \*Sán-ctus, Sán-ctus Dóminus Déus Sába - oth. Plá-ni sunt cæli et térra gló-ri-a tú - a.' and the second system is for 'Ho-sán-na in ex - cé-l-sis. Be-ne-díctus qui vé-nit in nó-mi-ne Dó-mi-ni. Ho-sán-na in ex - cé-l-sis.' The music is written in a simple, diatonic style with many eighth and sixteenth notes, typical of mid-20th-century liturgical music.

# Agnus Dei XIII • Graduale Romanum

Vatican II Hymnal • Page 187 • Accompaniment by Gustaaf Nees • [ccwatershed.org/vatican](http://ccwatershed.org/vatican)

I.

A - gnus De - i, \* qui tol - lis pec - cá - ta mun - di : mi - se - ré -

- re no - bis. A - gnus De - i, \* qui tol - lis pec - cá - ta

mun - di : mi - se - ré - re no - bis. A - gnus De - i, \*

qui tol - lis pec - cá - ta mun - di : do - na no - bis pa - cem.



# Agnus Dei XIII • Graduale Romanum

Vatican II Hymnal • Page 187 • Accompaniment by Henri Potiron • [ccwatershed.org/vatican](http://ccwatershed.org/vatican)

A - gnus Dé-i, — \* qui tól-lis pec - cá - ta mún - - di,

mi - se - ré - re — nó - bis. — A - gnus Dé - i, \* qui — tól -

lis pec - cá - ta mún - di, — mi - se - ré - re nó - - bis.

A - gnus Dé-i, — \* qui tól-lis pec - cá - ta mún - - di, dó - na nó - bis pá - cem.

**Agnus. I**