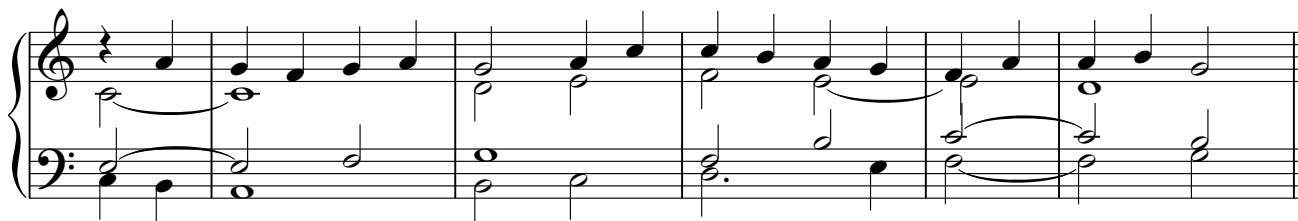
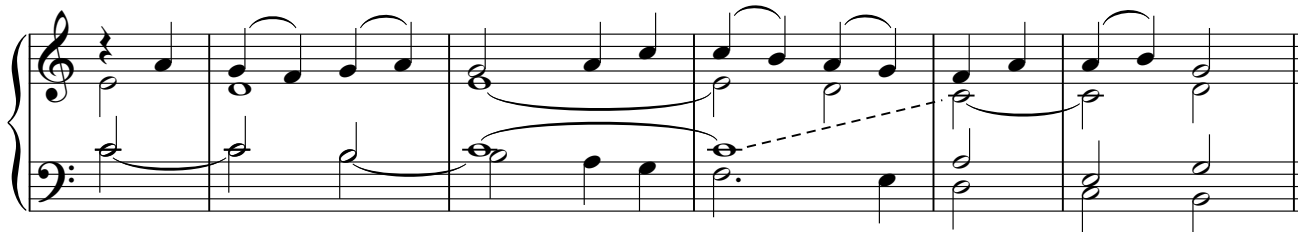


Organ  
Intro



Al - le - lú - ia, al - le - lú - ia, — al - le - lú - ia.

Cantor



Al - le - lú - ia, al - le - lú - ia, — al - le - lú - ia.

All  
Present



This is my be - lov - èd **Son**

Cantor



with whom I **am** well pleased; lis - **ten** to him.



Al - le - lú - ia, al - le - lú - ia, — al - le - lú - ia.

All  
Present

