

# [v. ii] 206 • All Creatures Of Our God And King

Tune: LASST UNS ERFREUEN (88 44 88 with Refrain) Text: after Francis of Assisi (†1226)

|         |              |             |           |        |        |             |            |             |
|---------|--------------|-------------|-----------|--------|--------|-------------|------------|-------------|
| 1. All  | crea - tures | of our      | God and   | King   | Lift   | up your     | voice and  | with us     |
| 2. Thou | rush - ing   | wind that   | art so    | strong | Ye     | clouds that | sail in    | Heav'n a -  |
| 3. Thou | flow - ing   | wa - ter,   | pure and  | clear, | Make   | mu - sic    | for thy    | Lord to     |
| 4. And  | all ye       | men of      | ten - der | heart, | For -  | giv - ing   | oth - ers, | take your   |
| 5. And  | thou most    | kind and    | gen - tle | Death, | Wait - | ing to      | hush our   | lat - est   |
| 6. Let  | all things   | their Cre - | a - tor   | bless, | And    | wor - ship  | Him in     | hum - ble - |



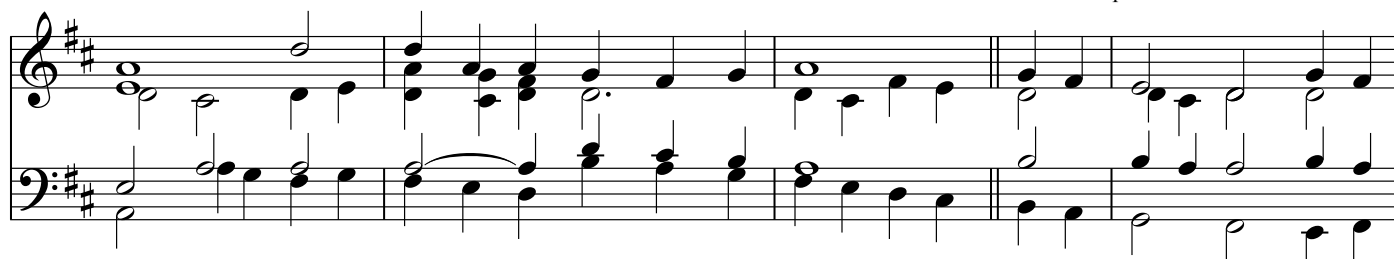
|         |                    |                    |                    |            |            |                       |
|---------|--------------------|--------------------|--------------------|------------|------------|-----------------------|
| sing,   | Al - le - lu - ia! | Al - le - lu - ia! | Thou               | burn - ing | sun with   | gold en               |
| long,   | O___ praise        | Him!               | Al - le - lu - ia! | Thou       | ris - ing  | moon, in              |
| hear,   | O___ praise        | Him!               | Al - le - lu - ia! | Thou       | fire so    | mas - ter - ful and   |
| part,   | O___ sing          | ye!                | Al - le - lu - ia! | Ye         | who long   | pain and sor - row    |
| breath, | O___ praise        | Him!               | Al - le - lu - ia! | Thou       | lead est   | home the child of     |
| ness,   | O___ praise        | Him!               | Al - le - lu - ia! | Praise,    | praise the | Fa - ther, praise the |



|         |        |            |             |            |        |
|---------|--------|------------|-------------|------------|--------|
| beam,   | Thou   | sil - ver  | moon with   | soft - er  | gleam! |
| joice,  | Ye     | lights of  | eve - ning, | find a     | voice! |
| bright, | That   | giv - est  | man both    | warmth and | light. |
| bear,   | Praise | God and    | on Him      | cast your  | care!  |
| God,    | And    | Christ our | Lord the    | way hath   | trod.  |
| Son,    | And    | praise the | Spir - it,  | Three in   | One!   |

## Refrain:

O\_\_\_ praise Him! O\_\_\_



praise Him! Al - le - lu - ia! Al - le - lu - ia! Al - le - lu - ia!

