

Mass in honor of St. Veronica, Op. 7

- for my wonderful wife, Veronica Byrne.

Lord, Have Mercy

Brandon Byrne (b. 1987)

Leader: Lord, have mer - cy. *All:* Lord, have mer - cy.

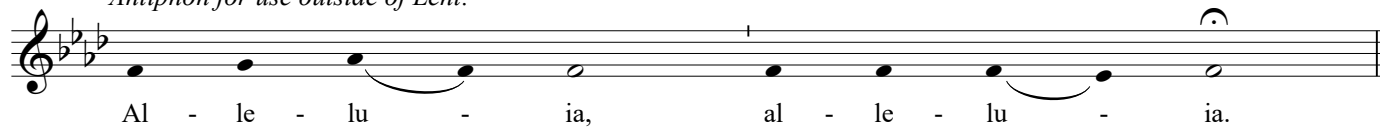
etc. Christ, have mer - cy. Christ, have mer - cy.

Lord, have mer - cy. Lord, have mer - cy.

Gospel Acclamation

Brandon Byrne (b. 1987)

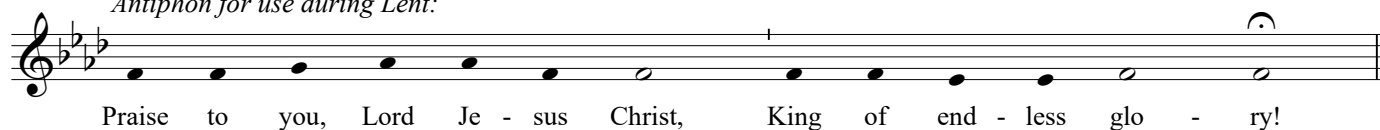
Antiphon for use outside of Lent:



Al - le - lu - ia, al - le - lu - ia.

The musical notation is on a single staff in G minor (one flat) and 4/4 time. It consists of two phrases: 'Al - le - lu - ia,' and 'al - le - lu - ia.' The melody is simple, with a final cadence on the word 'ia'.

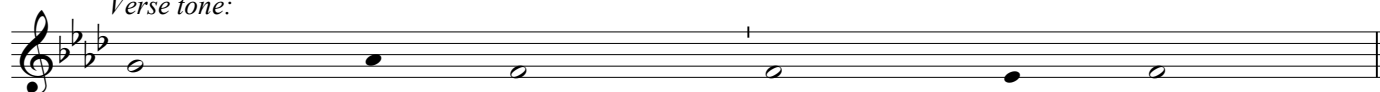
Antiphon for use during Lent:



Praise to you, Lord Je - sus Christ, King of end - less glo - ry!

The musical notation is on a single staff in G minor (one flat) and 4/4 time. It consists of one phrase: 'Praise to you, Lord Je - sus Christ, King of end - less glo - ry!' The melody is simple, with a final cadence on the word 'ry!'.

Verse tone:



The musical notation is on a single staff in G minor (one flat) and 4/4 time. It consists of a single phrase: 'Verse tone.' The melody is simple, with a final cadence.

Holy, Holy, Holy

Brandon Byrne (b. 1987)

Melodically (moderate hymn speed)

Ho - ly, Ho - ly, Ho - ly Lord God of hosts.

Piano / Organ

Heaven and earth are full of your glo - ry. Ho - san - na in the high - est.

Blessed is he who comes in the name of the Lord. Ho - san - na in the high - est.

p *rit.*

We Proclaim Your Death, O Lord

Brandon Byrne (b. 1987)

Melodically (moderate hymn speed)

We pro - claim your Death, O Lord, and pro -

fess your Res - ur - rec - tion un - til you come a - gain.

Amen

Brandon Byrne (b. 1987)

Melodically (moderate hymn speed)

A - men, a - men, a - - men.

Lamb of God

Brandon Byrne (b. 1987)

Melodically (moderate hymn speed)

Lamb of God, you take a - way the

mp

This system contains the first two staves of music. The vocal line (top staff) begins with a whole rest, followed by a repeat sign and a melodic phrase. The piano accompaniment (bottom two staves) features a rhythmic pattern of eighth and sixteenth notes. The key signature has three flats, and the time signature is 2/4. A dynamic marking of *mp* is placed below the piano part.

sins of the world, have mer - cy on us.

This system contains the second two staves of music. The vocal line continues the melody from the first system. The piano accompaniment provides harmonic support with chords and moving lines in both hands.

Lamb of God, you take a - way the sins of the world, grant us peace.

p rit.

This system contains the final two staves of music. The vocal line concludes with a long note. The piano accompaniment ends with a *p rit.* (piano ritardando) marking.

Lord, Have Mercy

Brandon Byrne (b. 1987)

Leader: Lord, have mer - cy. *All:* Lord, have mer - cy.

Musical notation for the first line of the song. It consists of two staves of music in a treble clef with a key signature of three flats (B-flat, E-flat, A-flat). The first staff is labeled 'Leader:' and the second 'All:'. Both staves show a melodic line with notes for 'Lord, have mer - cy.' and 'Lord, have mer - cy.' respectively. The notes are: G4 (quarter), A4 (quarter), B-flat4 (quarter), A4-G4 (half), F4 (quarter), E-flat4 (quarter), D4 (half). The lyrics are written below the notes.

etc. Christ, have mer - cy. Christ, have mer - cy.

Musical notation for the second line of the song. It consists of two staves of music in a treble clef with a key signature of three flats. The first staff is labeled 'etc.' and the second is unlabeled. Both staves show a melodic line with notes for 'Christ, have mer - cy.' and 'Christ, have mer - cy.' respectively. The notes are: G4 (quarter), A4 (quarter), B-flat4 (quarter), A4-G4 (half), F4 (quarter), E-flat4 (quarter), D4 (half). The lyrics are written below the notes.

Lord, have mer - cy. Lord, have mer - cy.

Musical notation for the third line of the song. It consists of two staves of music in a treble clef with a key signature of three flats. Both staves show a melodic line with notes for 'Lord, have mer - cy.' and 'Lord, have mer - cy.' respectively. The notes are: G4 (quarter), A4 (quarter), B-flat4 (quarter), A4-G4 (half), F4 (quarter), E-flat4 (quarter), D4 (half). The lyrics are written below the notes.

Gospel Acclamation

Antiphon for use outside of Lent: Al - le - lu - ia, al - le - lu - ia.

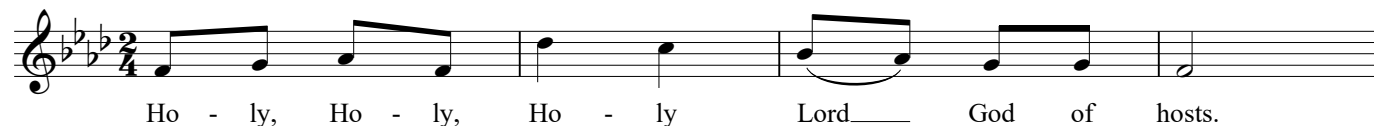
Musical notation for the first antiphon. It consists of two staves of music in a treble clef with a key signature of three flats. The first staff is labeled 'Antiphon for use outside of Lent:'. The notes are: G4 (quarter), A4 (quarter), B-flat4 (quarter), A4-G4 (half), F4 (quarter), E-flat4 (quarter), D4 (half), G4 (quarter), A4 (quarter), B-flat4 (quarter), A4-G4 (half), F4 (quarter), E-flat4 (quarter), D4 (half). The lyrics are written below the notes.

Antiphon for use during Lent: Praise to you, Lord Je - sus Christ, King of end - less glo - ry!

Musical notation for the second antiphon. It consists of two staves of music in a treble clef with a key signature of three flats. The first staff is labeled 'Antiphon for use during Lent:'. The notes are: G4 (quarter), A4 (quarter), B-flat4 (quarter), A4-G4 (half), F4 (quarter), E-flat4 (quarter), D4 (half), G4 (quarter), A4 (quarter), B-flat4 (quarter), A4-G4 (half), F4 (quarter), E-flat4 (quarter), D4 (half), G4 (quarter), A4 (quarter), B-flat4 (quarter), A4-G4 (half), F4 (quarter), E-flat4 (quarter), D4 (half). The lyrics are written below the notes.

Holy, Holy, Holy

*Leader:**



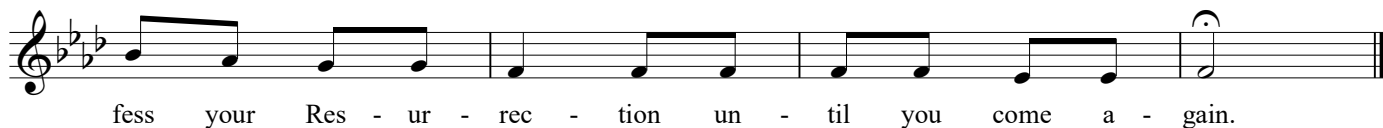
*All:**



We Proclaim Your Death, O Lord

*Leader:**

*All:**



Amen

*1st time, Leader.
2nd time, All.**

If, repeat.*

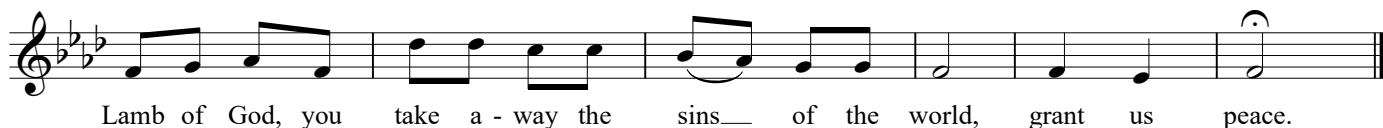


Lamb of God

*Leader:**



*All (henceforth):**



** If no keyboard accompaniment.*