

Gospel Acclamation

for Palm Sunday of the Passion of the Lord / Year ABC

Tone III

Organ:

The organ introduction consists of two staves in G major (one sharp). The right hand plays a melodic line with eighth and quarter notes, while the left hand provides a harmonic accompaniment with chords and moving lines.

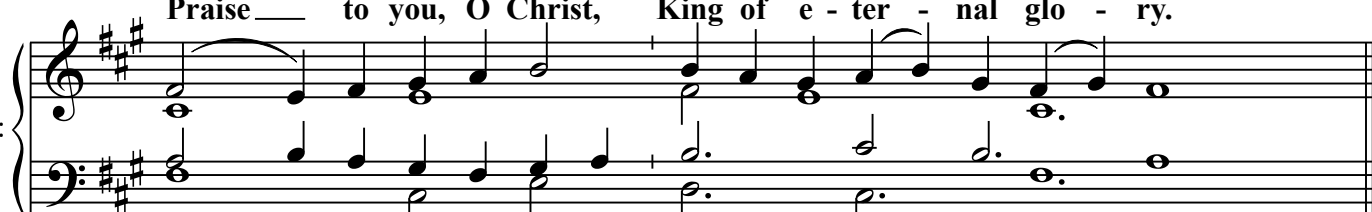
Cantor:

Praise — to you, O Christ, King of e - ter - nal glo - ry.

The cantor part begins with a melodic line in G major. The lyrics are "Praise — to you, O Christ, King of e - ter - nal glo - ry." The music features a mix of quarter and eighth notes with some rests.

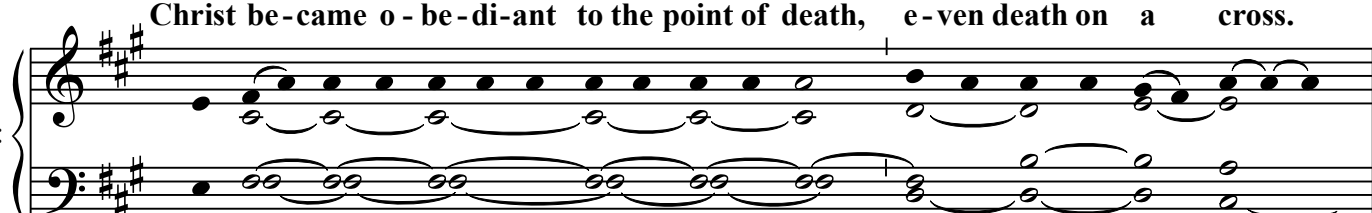
All:

Praise — to you, O Christ, King of e - ter - nal glo - ry.

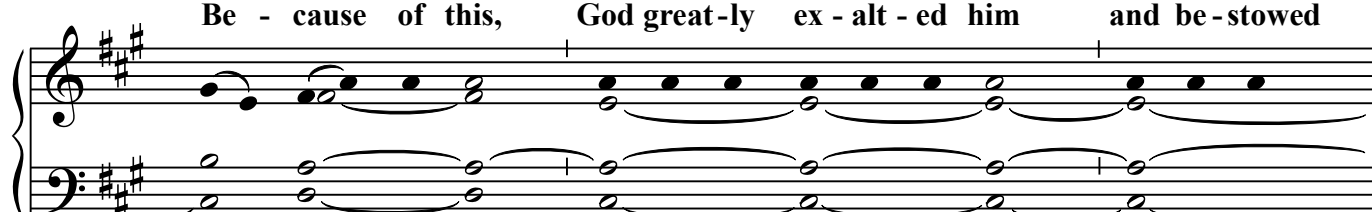
The "All" part features a homophonic setting of the first phrase. The right hand has a simple melody, and the left hand has a steady accompaniment of chords.

Cantor:

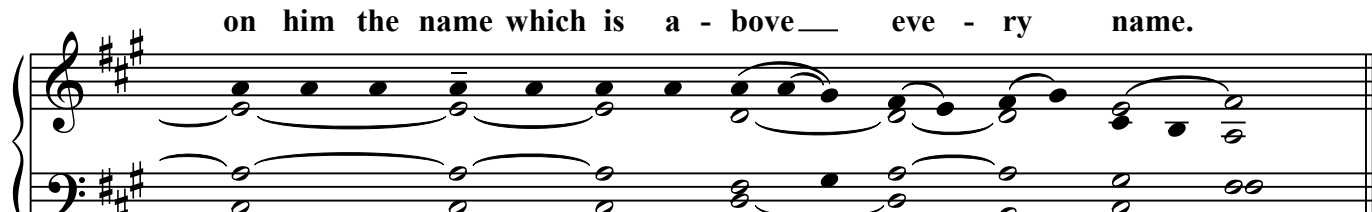
Christ be - came o - be - di - ant to the point of death, e - ven death on a cross.

The cantor part continues with a more complex melodic line. The lyrics are "Christ be - came o - be - di - ant to the point of death, e - ven death on a cross." The music uses many eighth notes and slurs.

Be - cause of this, God great - ly ex - alt - ed him and be - stowed


The "All" part continues with the same homophonic texture. The lyrics are "Be - cause of this, God great - ly ex - alt - ed him and be - stowed".

on him the name which is a - bove — eve - ry name.

The "All" part concludes the second phrase with the lyrics "on him the name which is a - bove — eve - ry name." The music ends with a final chord.

All:

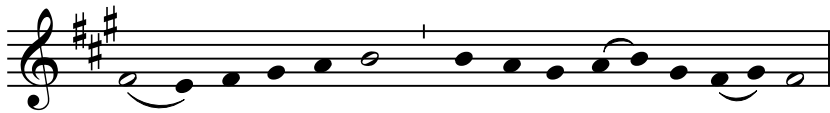
Praise — to you, O Christ, King of e - ter - nal glo - ry.

The "All" part concludes with a final homophonic setting of the first phrase. The lyrics are "Praise — to you, O Christ, King of e - ter - nal glo - ry." The music ends with a final chord.

Copy for reprinting in service leaflet or bulletin:

Gospel Acclamation

Tone III



Music: © 2016 Royce Nickel. Licensed in the Creative Commons by-nc-nd 3.0