

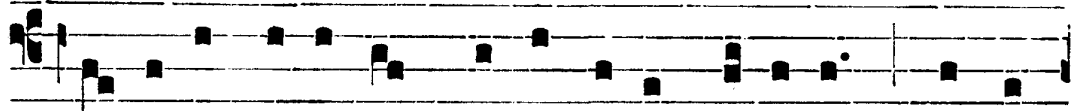
MESSE DES MORTS.

Chant abrégé du Graduel et du Trait.

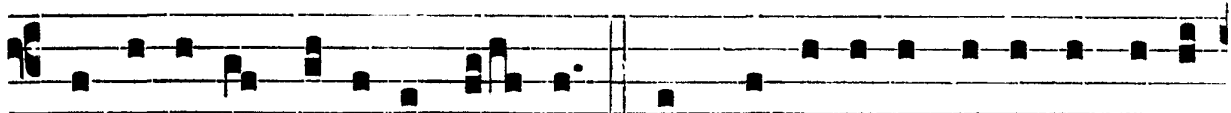
Grad.

2.

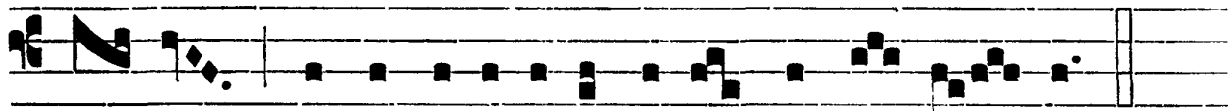
R



Equi- em aetérnam dó-na é- is Dómi-ne : et lux



perpé-tu- a lú-ce- at é- is. √. In memó-ri- a aetérna é-rit



jú- stus : ab audi- ti- óne má-la non ti- mé- bit.

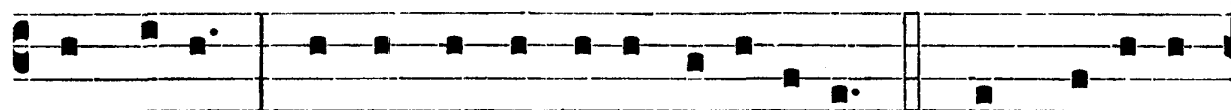
Trait.

8.

A



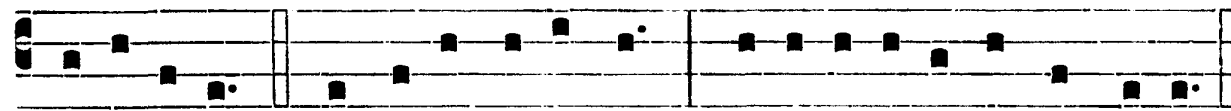
Bsólve, Dómi-ne, á-nimas ómni- um fi-dé- li- um de-



functó-rum ab ómni víncu- lo de-lictó-rum. √. Et grá-ti- a



tú- a íl-lis succurrénte, me-re- ántur evá-de-re ju-dí-ci- um



ulti- ó-nis. √. Et lú-cis aetérnae be- a-ti-tú-di-ne pérfru- i.