

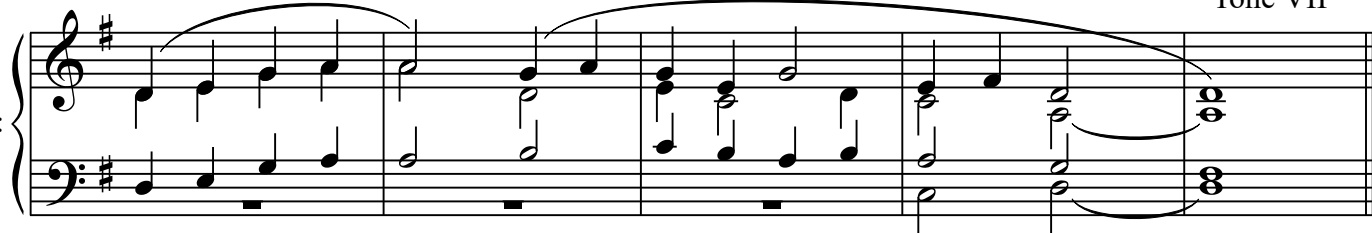
# Alleluia

for the Commemoration of All the Faithful Departed (All Souls' Day)

November 2


Tone VII

Organ:

Musical notation for the organ introduction, consisting of two staves (treble and bass clef) in G major. The melody is a simple, ascending line of eighth notes: G4, A4, B4, C5, D5, E5, F#5, G5. The bass line consists of sustained chords: G2, B1, D2, E2, F#2, G2.


Cantor:

Al - le - lu - ia, al - le - lu - ia, al - le - lu - ia.

Musical notation for the cantor's first line, featuring a vocal line and organ accompaniment. The vocal line is in G major and follows the melody: Al - le - lu - ia, al - le - lu - ia, al - le - lu - ia. The organ accompaniment is in G major with a simple harmonic accompaniment.

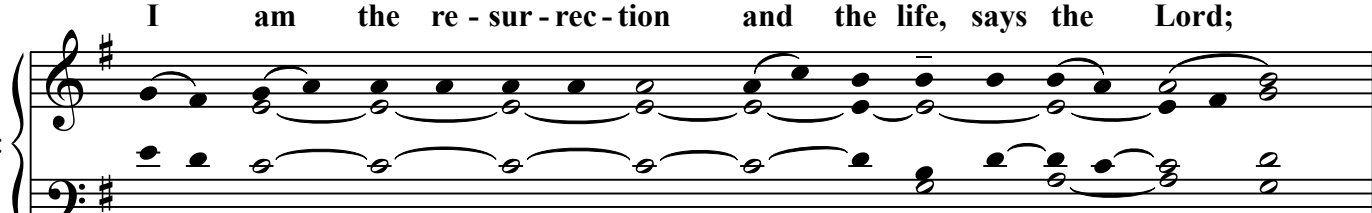
All:

Al - le - lu - ia, al - le - lu - ia, al - le - lu - ia.

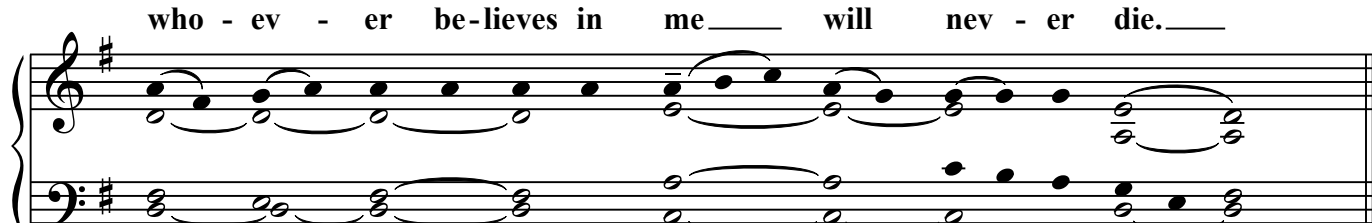
Musical notation for the all's second line, featuring a vocal line and organ accompaniment. The vocal line is in G major and follows the melody: Al - le - lu - ia, al - le - lu - ia, al - le - lu - ia. The organ accompaniment is in G major with a simple harmonic accompaniment.

Cantor:

I am the re - sur - rec - tion and the life, says the Lord;

Musical notation for the cantor's second line, featuring a vocal line and organ accompaniment. The vocal line is in G major and follows the melody: I am the re - sur - rec - tion and the life, says the Lord;. The organ accompaniment is in G major with a simple harmonic accompaniment.

who - ev - er be - lieves in me will nev - er die.

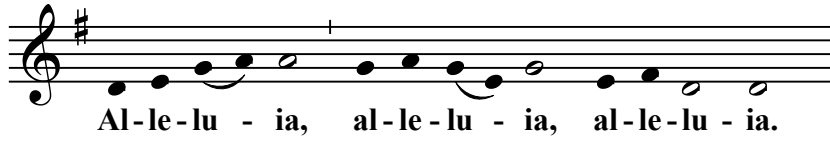
Musical notation for the organ accompaniment for the second line, consisting of two staves (treble and bass clef) in G major. The melody is a simple, ascending line of eighth notes: G4, A4, B4, C5, D5, E5, F#5, G5. The bass line consists of sustained chords: G2, B1, D2, E2, F#2, G2.

All:

Al - le - lu - ia, al - le - lu - ia, al - le - lu - ia.

Musical notation for the all's third line, featuring a vocal line and organ accompaniment. The vocal line is in G major and follows the melody: Al - le - lu - ia, al - le - lu - ia, al - le - lu - ia. The organ accompaniment is in G major with a simple harmonic accompaniment.

Copy for reprinting in service leaflet or bulletin:

**Alleluia***Tone VII*

Music: © 2016 Royce Nickel. Licensed in the Creative Commons by-nc-nd 3.0