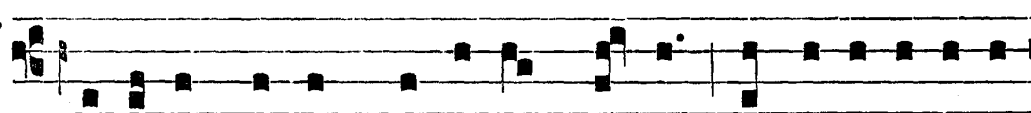


VERSION 1926 • Gradual for RORATE MASS in Advent:

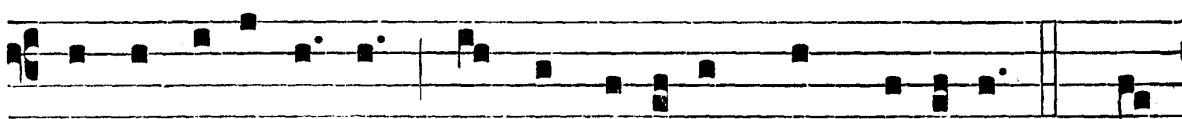
I. Grad.

2.

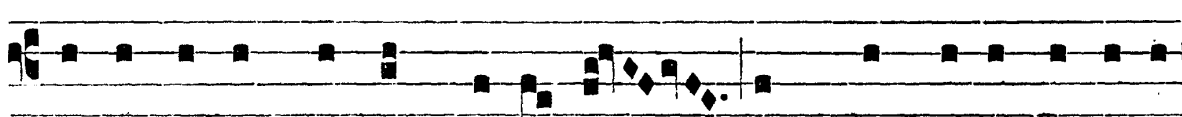
T



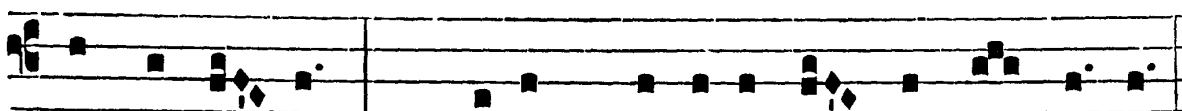
Olli-te* pórtas, prínci-pes, véstras : et e-levámi-ni,



pórtae aeterná-les : et intro-í-bit Rex gló-ri-ae. ∇. Quis



ascéndet in móntem Dómi-ni? Aut quis stábit in ló-co



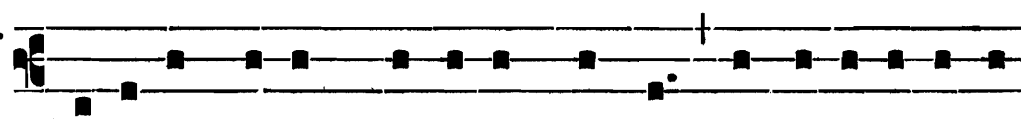
sáncto é-jus? Inno-cens má-nibus et múndo córde.

VERSION 1955 • Gradual for RORATE MASS in Advent:

I Grad.

II

T



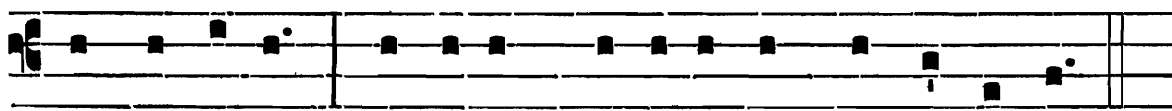
Olli-te* pórtas, prínci-pes, véstras: et e-le-vámi-ni,



pórtae aeterná-les : et intro-í-bit Rex gló-ri-ae. ∇. Quis



ascéndet in móntem Dómi-ni? aut quis stá-bit in ló-co



sáncto é-jus? Inno-cens má-ni-bus et múndo córde.