

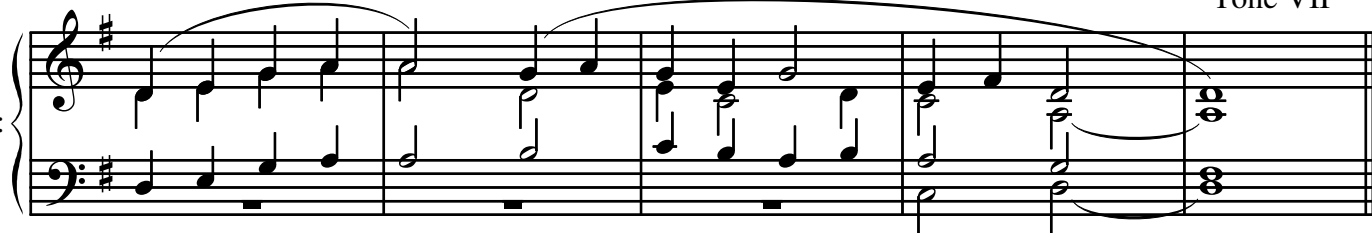
Alleluia

for the Nativity of Saint John the Baptist: Mass of the Day

June 24

Tone VII


Organ:



Organ accompaniment for the first Alleluia line, consisting of two staves (treble and bass clef) in G major. The music features a steady eighth-note accompaniment in the bass and a melodic line in the treble, with a long slur over the first four measures.

Cantor:

Al - le - lu - ia, al - le - lu - ia, al - le - lu - ia.



Cantor's vocal line for the first Alleluia line, consisting of two staves (treble and bass clef) in G major. The melody is in the treble clef, and the accompaniment is in the bass clef. The lyrics are written above the staff.

All:

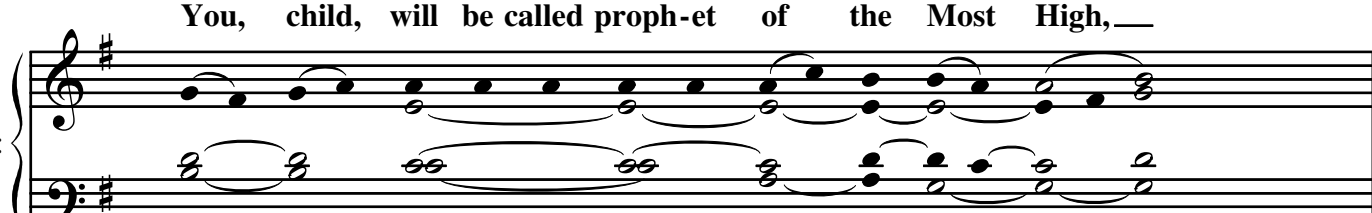
Al - le - lu - ia, al - le - lu - ia, al - le - lu - ia.



All's vocal line for the first Alleluia line, consisting of two staves (treble and bass clef) in G major. The melody is in the treble clef, and the accompaniment is in the bass clef. The lyrics are written above the staff.

Cantor:

You, child, will be called proph-et of the Most High,—



Cantor's vocal line for the second Alleluia line, consisting of two staves (treble and bass clef) in G major. The melody is in the treble clef, and the accompaniment is in the bass clef. The lyrics are written above the staff.

for you will go be-fore the Lord— to pre-pare his way.—



Organ accompaniment for the second Alleluia line, consisting of two staves (treble and bass clef) in G major. The music features a steady eighth-note accompaniment in the bass and a melodic line in the treble, with a long slur over the first four measures.

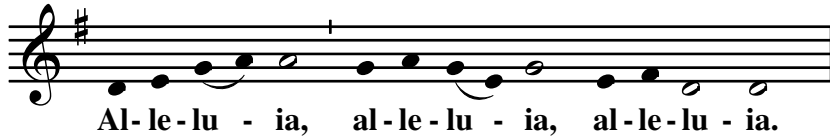
All:

Al - le - lu - ia, al - le - lu - ia, al - le - lu - ia.



All's vocal line for the second Alleluia line, consisting of two staves (treble and bass clef) in G major. The melody is in the treble clef, and the accompaniment is in the bass clef. The lyrics are written above the staff.

Copy for reprinting in service leaflet or bulletin:

Alleluia*Tone VII*

Music: © 2016 Royce Nickel. Licensed in the Creative Commons by-nc-nd 3.0