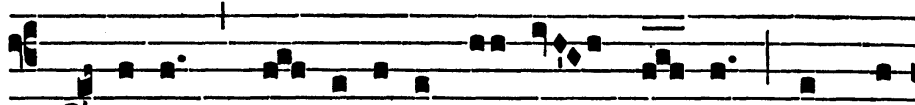
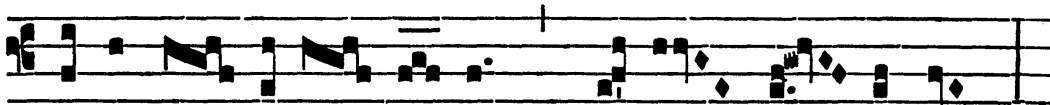


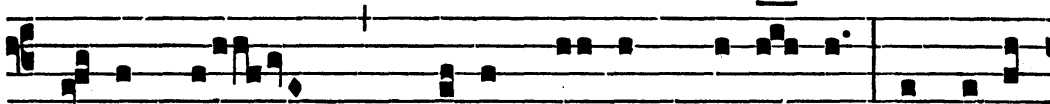
II
D



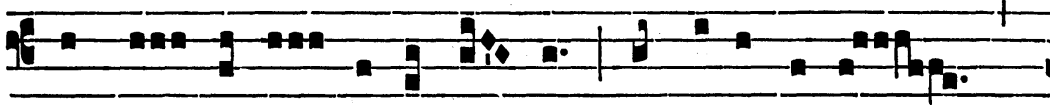
O-mi-nus * for-ti-túdo ple-bis su-ae, et pro-
The-Lord-is the-strength of-people of-Him, & the-



téctor sa-lu-tá-ri-um Chri-sti su-i est :
protector of-the-salvation-of-the anointed of-Him He-is :



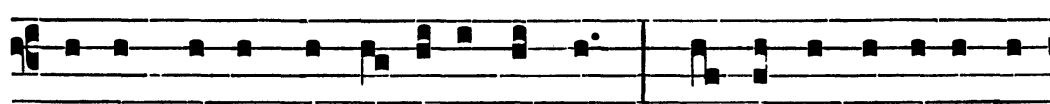
salvum fac póp-u-lum tu-um, Dómi-ne, et bé-ne-
safe make the-people of-Thee, O-Lord, & bless



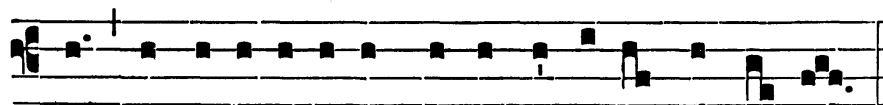
dic he-re-dí-tá-ti tu-ae, et rege e-os
the-inheritance of-Thee, & rule them



usque in saé-cu-lum. *Ps.* Ad te Dómi-ne clamábo,
[for ever.] Unto Thee O-Lord I-will-cry,



De-us me-us ne sí-le-as a me : * nequándo tá-ce-as a
O-God of-me, do-not be-silent to me: lest-if-Thou be-silent to



me, et assimi-lábor descendé-nti-bus in la-cum.
me, I-become-like them-that-go-down into the-pit.

CCWATERSHED.ORG/CAMPION • *A congregational Latin Mass hymnal.*

II
G



Lóri-a Pátri, et Fí-li-o, et Spi-rí-tu-i Sáncto. * Si-cut érat in



prínci-pi-o, et nunc, et semper, et in saé-cu-la sae-cu-ló-rum. Amen.

INTROIT • 6th Sunday after Pentecost, EF (Ps 27: 8-9) The Lord is the strength of his people and the saving protector of his Anointed; Lord, save thy people and bless thine inheritance and rule over them for ever. (Ps 27: 1) To thee, Lord, shall I cry; my God, be not deaf to me, lest perhaps thou speak not to me and I become like those who go down to the pit. Starting Pitch = D