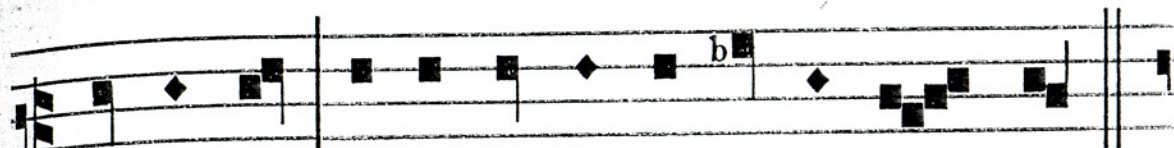


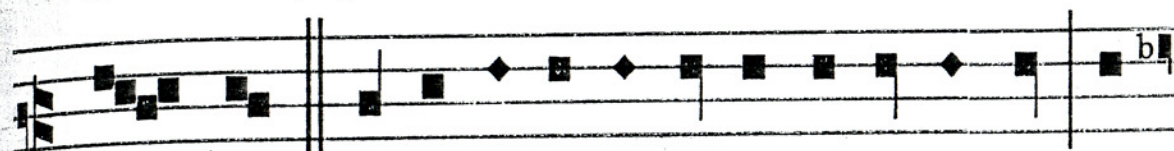
in gy-ro me - o, et cir-cúmde-dit me fel-le et



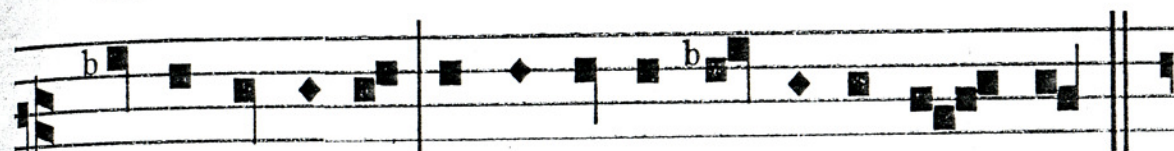
la - bó - re. Beth. In te - ne-bró-sis col-lo-



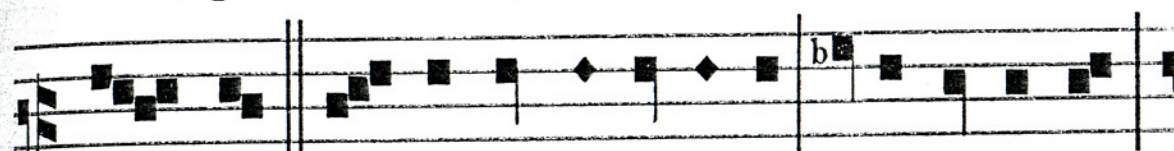
cá - vit me, qua-si mór-tu - os sem-pi - tér - nos.



Ghi - mel. Circumæ-di-fi-cá-vit advérsum me, ut



non e-gré-di-ar, ag-gravá-vit cómpedem me - um.



Ghi - mel. Sed et cum clamá-ve-ro, et ro-gá-ve-ro,



exclúsit o-ra-ti - ónem me - am. Ghi - mel. Conclú-sit



vias meas la-pí-dibus quadris, sémitas meas subvér - tit.



Je - rú - sa-lem. etc. vide pag. 169.