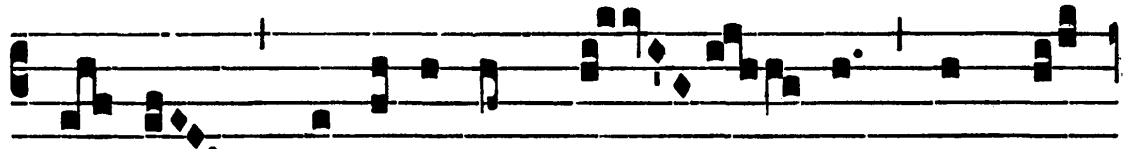


Grad.

7.

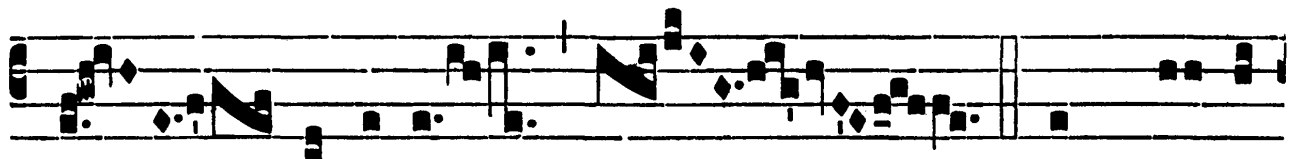
**J**



A-cta \* co-gi-tá-tum tu- um in Dó-



mi-no, et ipse te



e- nútri- et.  $\nabla$ . Dum cla-má-



rem ad Dómi-num, exau-dí-vit



vo- cem me- am ab his qui appro-pínquant \*



mi- hi.

*Translation*

Cast thy care upon the Lord and he shall sustain thee. When I cried to the Lord he heard my voice, from them that draw near to me.

