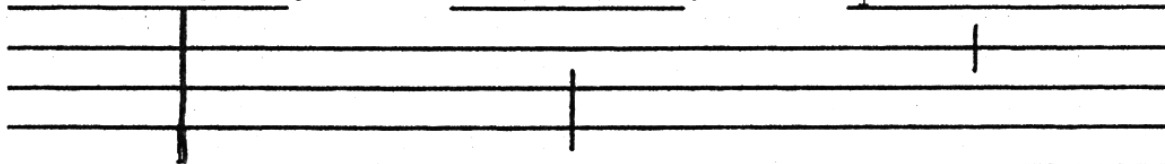


The second letter from the Manager of the Vatican Press deals with the spacing of the notes; the date is September 6, 1906.

#### Notice to Publishers.

Some explanation has been requested concerning the spaces which separate the notes, in the Vatican Edition of Gregorian Chant, in order to mark the phrasing of the chant.

First of all, there are the bars which divide the staff completely or partly; namely:  
Grande Barre.                      demi-barre.                      quart de barre.



whole rest.                      half-rest.                      quarter-rest.

These must be reproduced exactly by the publishers. In the same way, account must be taken of the diverse spaces which must be left between notes or groups of notes over the one syllable.

These spaces correspond to those designated in typography by the terms  $1/4$ ,  $1/2$ , 1.

$1/4$  equals the half of the width of a note.

$1/2$  equals the entire width of a note.

1 equals the width of two notes.\*

These spaces are of obligation only in the case in question, that is to say, only between the groups which succeed one another on one and the same syllable.

They are left to the discretion of the compositor, for the rectification of his lines, 1) at the end of a group preceding a syllable, and 2) before or after a bar.

GIO. PASQ. SCOTTI,

Manager of the Vatican Press.

Rome, September 6th, 1906.

\*In order to estimate the space to be left between two groups, the latter of which is to be carried over to the next line, one must reckon the space between the former group and the guide.<sup>1</sup>